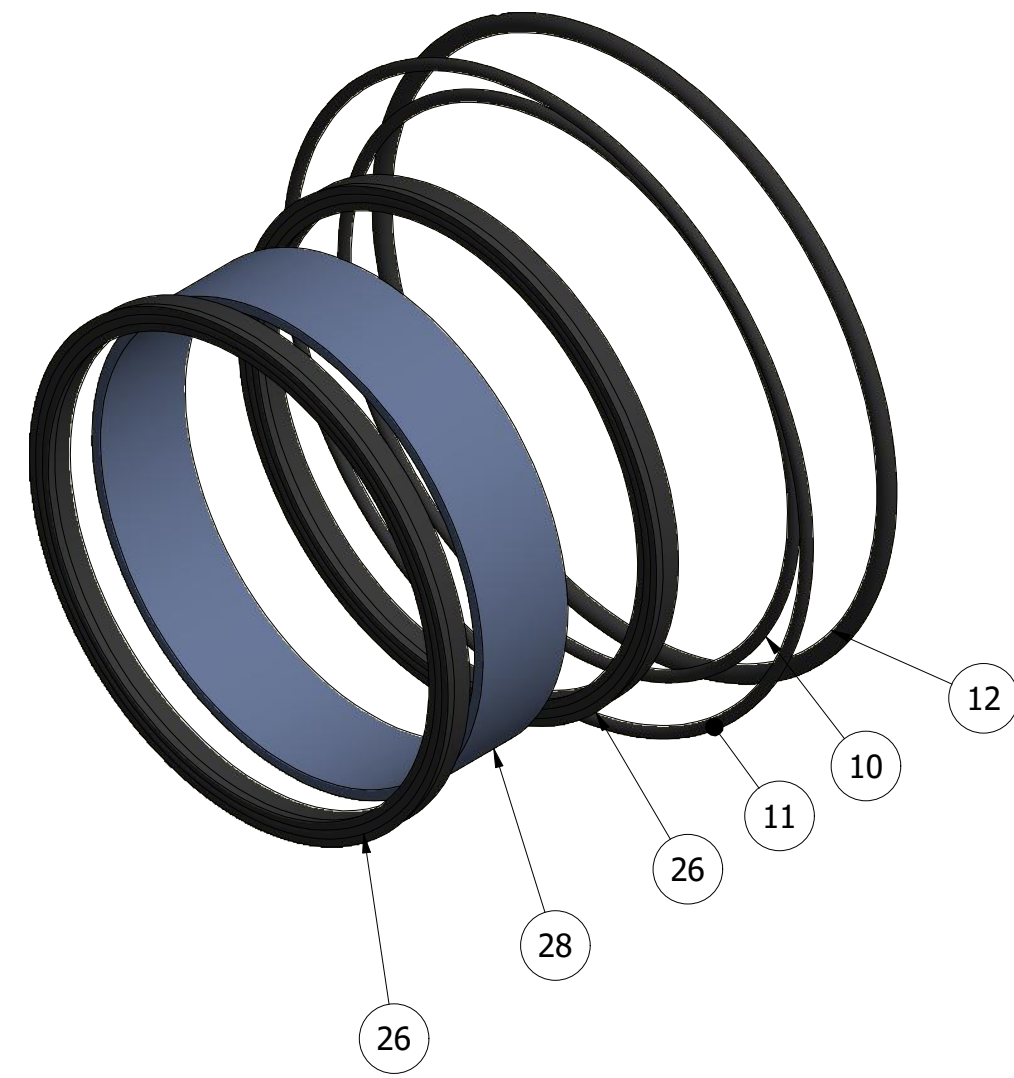
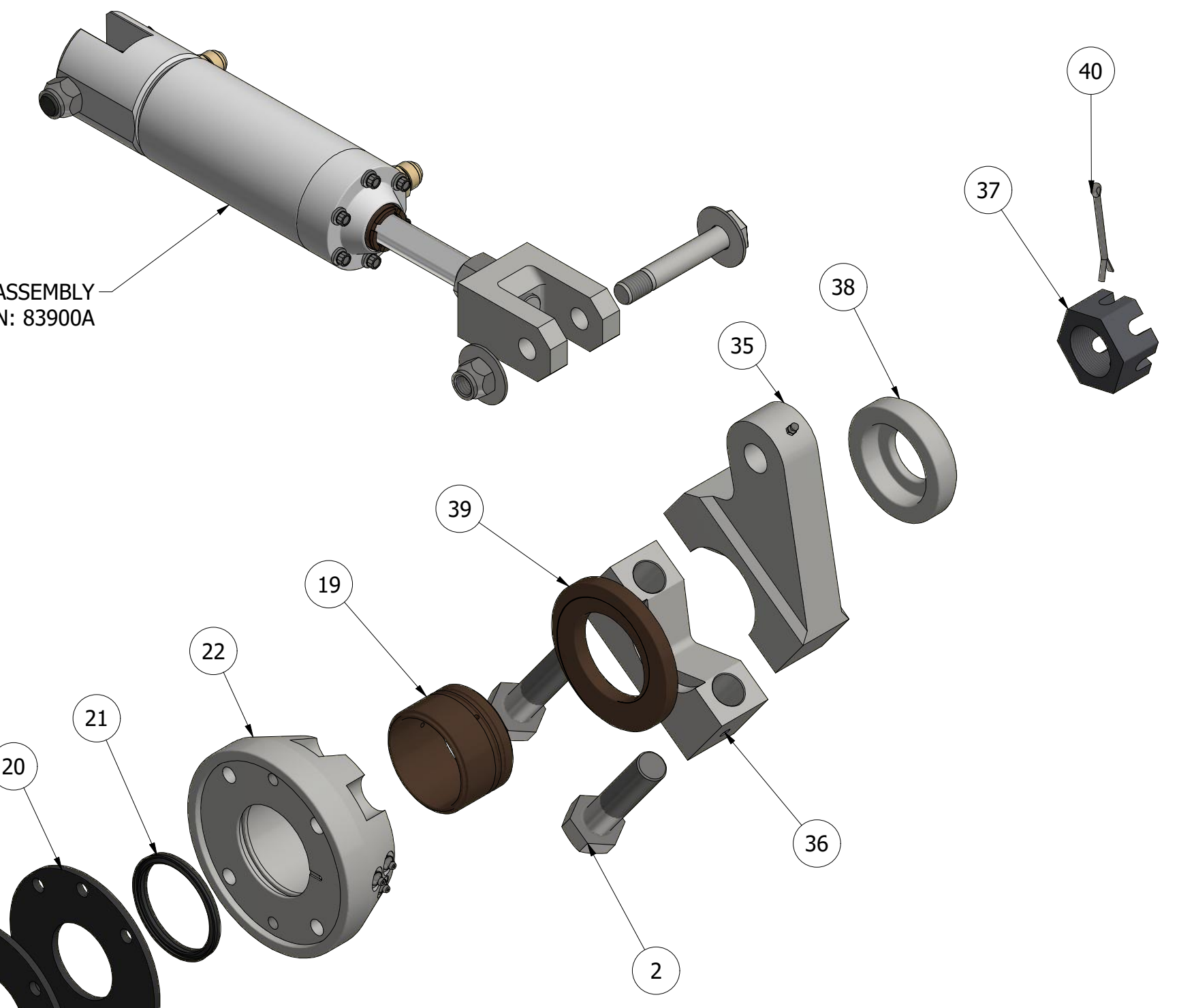


ITEM	QTY	PART NUMBER	TITLE
1	6	022.2004-28	3/8"-16 x 1.75" Hex Head Cap Screw
2	2	022.2016-64	1"-14 x 4" Hex Head Cap Screw
3	4	022.3010-48	5/8"-11 x 3" Length Flanged Hex Head Cap Screw
4	2	022.3010-52	5/8"-11 x 3.25 Hex Head Flange Screw
5	4	022.4017-56	5/8"-11 x 3.5" Flat Head Hex Screw
6	6	022.7011	3/8"-16 Hex Nut
7	10	022.7217	5/8"-11 Flanged Hex Nut
8	6	022.8010	5/8" FLAT WASHER
9	6	022.8207	3/8" Lock Washer
10	1	025.1260	O-RING -260 BN 70
11	1	025.1264	O-RING -264 BN 70
12	1	025.1366	O-RING -366 BN 70
13	1	83900	2.5" SHIFT CYLINDER ASSEMBLY
14	1	83902-01	3/4-10 BOLT, CLEVIS, 2.5" CYLINDER
15	1	83917	CLEVIS BOLT
16	1	85131	WEAR PLATE CASTING
17	1	85151	5" OUTLET HOUSING FLANGE
18	1	85152	OUTLET FLANGE HARDENED INSERT
19	1	85162	FLANGE BEARING INSERT
20	1	85163	3" OUTER SHAFT SEAL
21	1	85164	3" OUTER S/T SHAFT SEAL
22	1	85166	MK IV FLANGE BEARING
23	5	85166.04	GREASE FITTING, 3/8"-24
24	1	85168	RETAINER SEAL, S/T SHAFT
25	1	85169	SEAL, S/T SHAFT, HOPPER SIDE
26	2	85174	LOADED LIP (OUTER)
27	1	85180	OUTLET FLANGE BEARING
28	1	85180.01	1 1/4" GUIDE BAND
29	1	85182	Swing Tube Outlet Bearing Key
30	1	85301-01	Chromed Sleeve, Swing Tube Shaft
31	1	85320	CHROME OUTLET ASSEMBLY
32	1	85335	WEAR RING SEAL
33	1	85336	1/2" MODIFICATION CAST WEAR-RING, SWINGTUBE
34	2	85405	CHIP RING, 6" MATERIAL CYLINDER
35	1	85501	BELL CRANK
36	1	85502	Bell Crank Cap
37	1	85511	CASTLE NUT, SWINGTUBE SHAFT
38	1	85512	Thrust Washer Cap
39	1	85513	Thrust Washer
40	1	85514	Cotter Pin, 3/16" Diameter, 3" Length

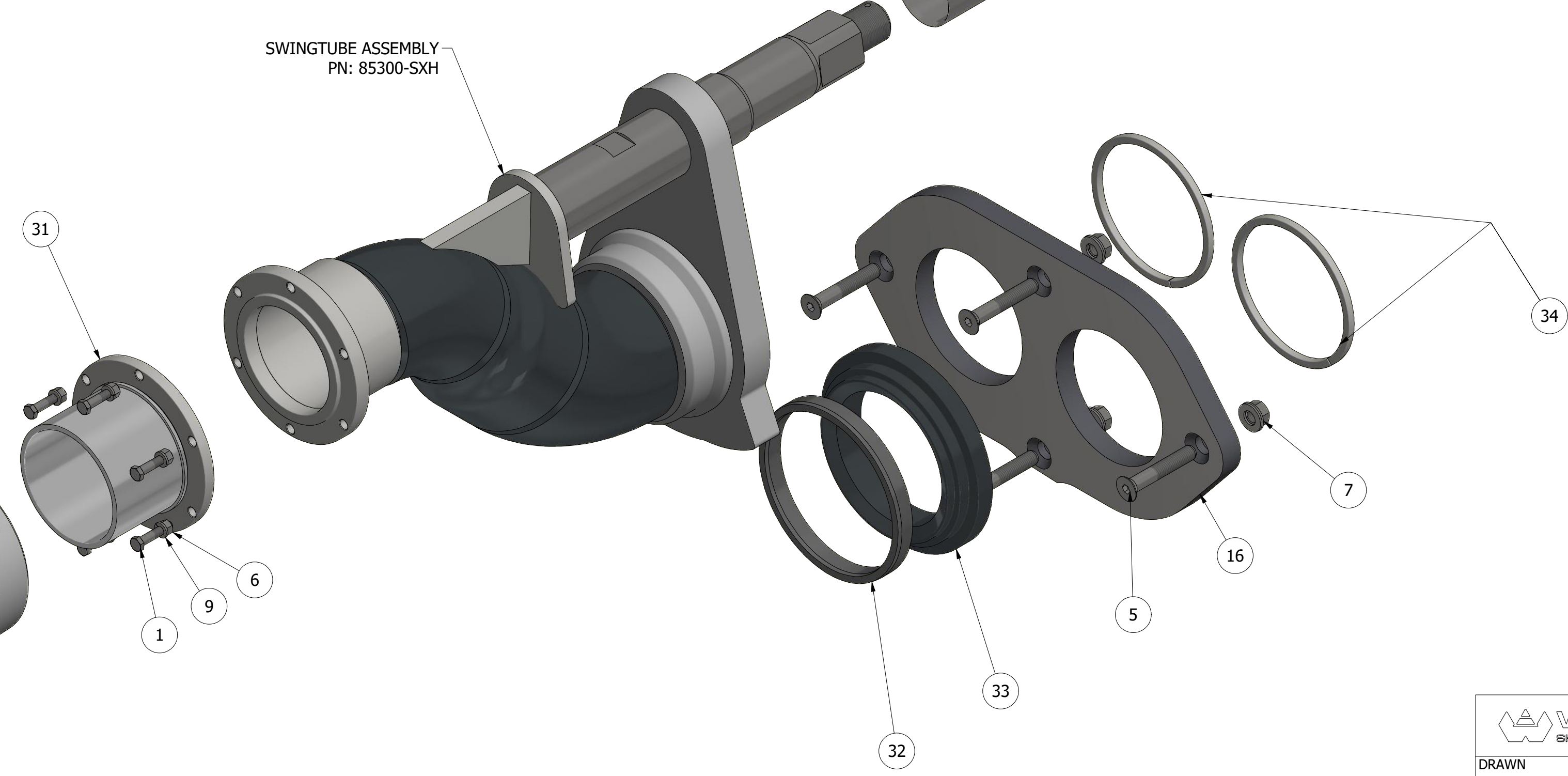
OUTLET BEARING SEAL HOUSING KIT
PN: 85180



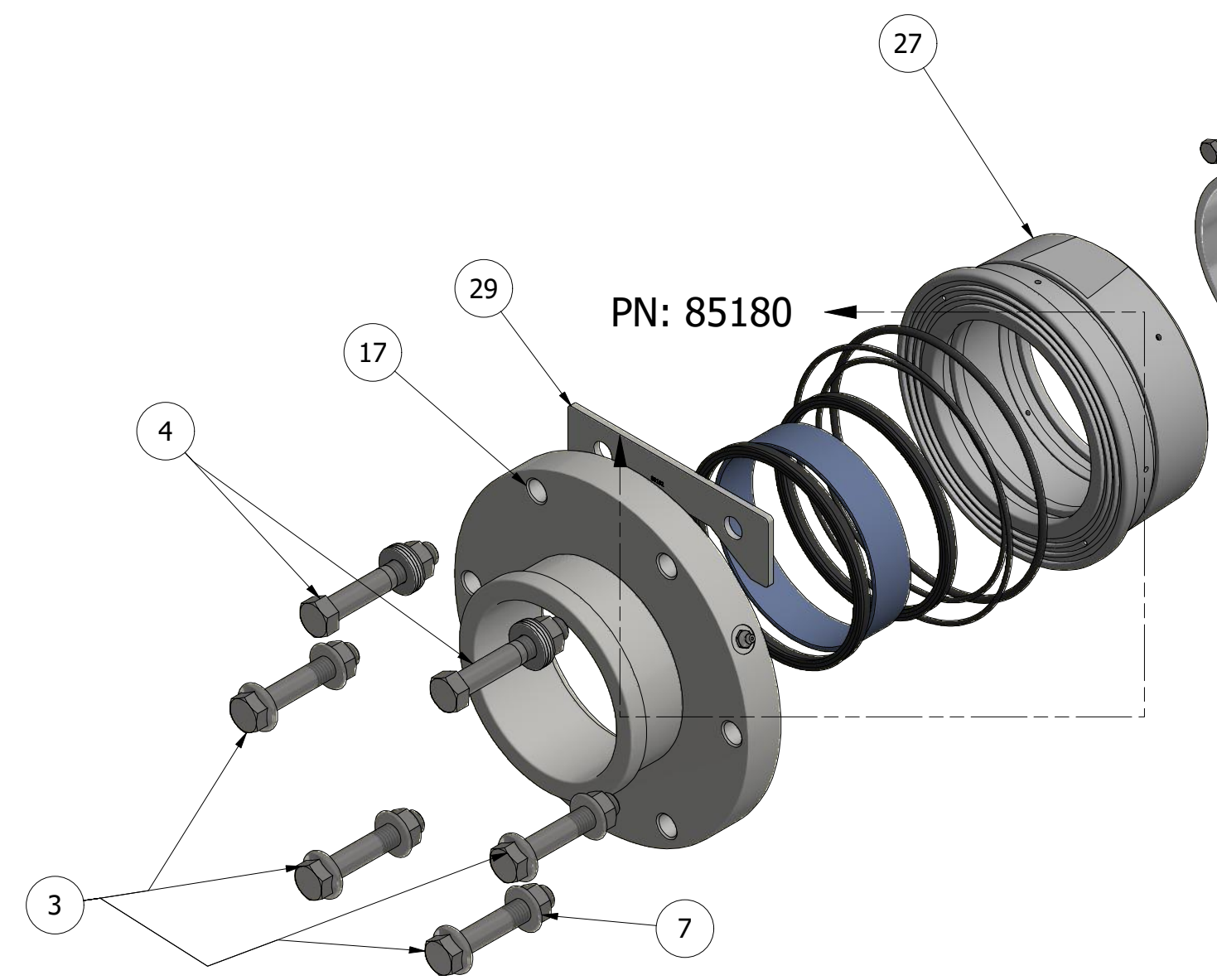
SHIFT CYLINDER ASSEMBLY
PN: 83900A



SWINGTUBE ASSEMBLY
PN: 85300-SXH



PN: 85180



		ASSEMBLY	
DRAWN JOSEPH HARPOLE		2/19/20	
CHECKED		MATERIAL	
QA		TITLE	
MFG		SINGLE SHIFTING HOPPER ASSEMBLY	
APPROVED		SIZE	DWG NO
DO NOT SCALE TOLERANCES ARE: FRACTIONS: 1/32" DECIMALS: .001" .001" .001" .001" ANGLES: ± 1° CONCENTRICITY: .015" TIR		D	85100
SCALE		REV	SHEET 1 OF 1